

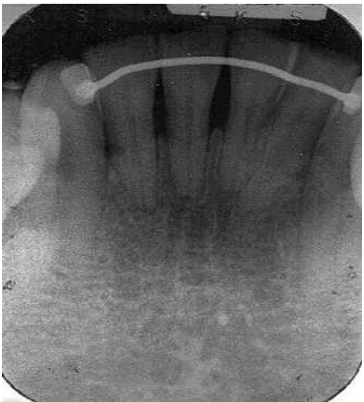


## **Endodontics or Not?**

Contributed By: Dr. Richard Hunter – April 2000

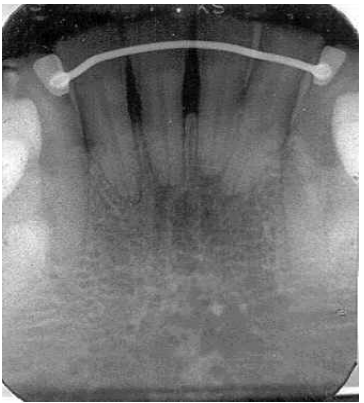


A 53-year-old Asian female presented to her general dentist for routine cleaning and examination. A radiograph of the lower anterior teeth revealed a diffuse radiolucency of mixed density at the apices of 4.1, 4.2, 3.1, & 3.2.



She was asymptomatic. Cold testing did not reveal a vital response from 4.1 & 3.2 however, all teeth responded to electric vitality testing.

Diagnosis: Periapical Cemental Dysplasia (Cementoma)



PCD is an asymptomatic, periapical lesion. More than 70% occur in Blacks and it is 10 times more common in females. Over 90% occur in the mandible and usually develop apical to the incisors. The development is categorized into 3 divisions:

1. radiolucent
2. mixed radiolucent and radiopacity
3. radiopacity



It takes approximately 6 years to progress through these stages.

No treatment is indicated!