



**The Agony and the Ecstasy**  
**The Return of the Mother-In-Law**

Contributed By: Dr. Steven J. Cohen - February 1999



FIGURE 1

**Figure 1:**

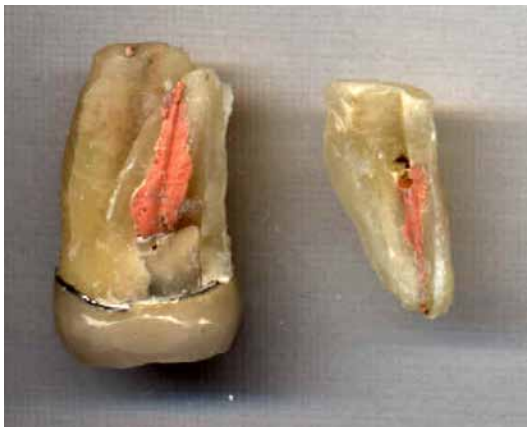
In March of 1998, this case was reviewed here. This involved a retreatment of tooth 2.6, for a colleague's mother-in-law. During retreatment and obturation, a 2nd mesio-buccal canal was found, and some interesting lateral anatomy was picked up along the mesio-buccal root. There was some speculation as to whether this was true accessory canal sealing, or a possible root fracture. This figure is the immediate post obturation film.



FIGURE 2

**Figure 2:**

The patient returned 6 months later for recall examination. She reported no symptoms, but clinical examination revealed a fistula buccal to tooth 2.6. Periodontal probing revealed one pocket, 8 to 9 mm. in depth, at the mesio-buccal corner of this tooth. The tooth had been restored with a post-core, and new crown. Radiograph revealed a radiolucent lesion engulfing the entire MB root. Recall film shown. The patient was advised of the failure, and options of MB root amputation/extraction were discussed. The patient opted for extraction.



**Specimen:**

Extracted Tooth 2.6. The dentist removed the tooth, and I asked that it be sent to me. The MB root fractured on removal, along the suspected crack line. There is also a crack line along the palatal root. Interesting to see how the injected gutta percha filled the MB-1 -- MB-2 network!!!

Editor's Note: Thank God it wasn't my mother-in-law.